

HASD Middle School Restructuring

April 18, 2017 PARENT PRESENTATION



Committee Members



Kathy Harrison

Jamey Caldwell

Lisa Socrates

Eric Strumsky

Mandy Forrester

Tanya Steeber

Dan Lauritzen

Amanda O'Leary

Mark Beck

Matt Fox

Denise McGill

Jen Busato

Judy Varacalli

Bobbi Springer

Michelle Ulery

Cheryl Goughneour

Tim Hines

Robert Bojarski

Committee (Continued)



Todd McMillen

Kira Lent

Greg Saraceni

Lisa Rundy - Peila

Darla Bryant

Tommy Bishop

Katrina Brown

Jeffrey Coover

Dr. Jeanne Smith

Natalie Dedo

Deanna Mikesic

Dr. Barbara Marin

Ted Kopas

Jason Lochner

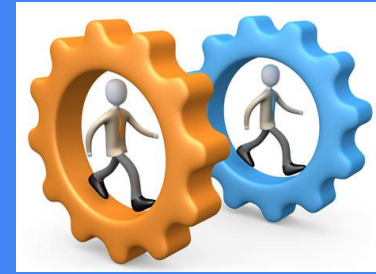
Dr. Mark Gross

Earl Barber

Aaron Steinly

Dr. Tammy Wolicki

Process



September 22, 2016 Dr. Robert Furman

October 11, 2016 Schools to Watch
Survey Analysis

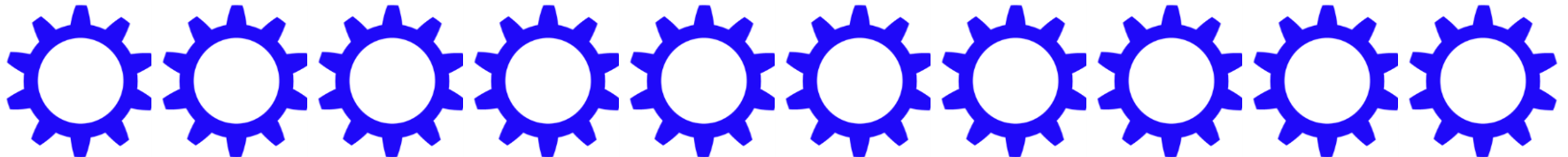
January 11, 2017 Continued Survey Analysis

February 15, 2017 Sharing of School Visits

February 28, 2017 Development of Belief
Statements

March 15, 2017 - Continued Research of Middle
School Practices

March 22, 2017 - Proposed Schedule



Schools to Watch

Dr. Robert Furman Presentation/Middle School Philosophy

Academic Excellence

Developmental Responsiveness

Social Equity

Organizational Structure



Middle School Visits in February

Derry Area Middle School

Boyce Middle School, Upper St. Clair

Fort Couch, Upper St. Clair

South Fayette Middle School

Norwin Middle School



Belief Statements: Result of STW Survey Analysis, School Visits, & Research

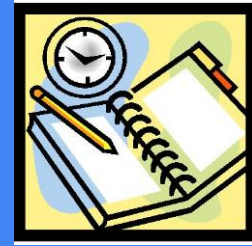


1. We believe that teaming is a necessary component of all middle school programs.
2. We believe that the quality of instruction is increased with longer class periods that lead to more opportunities for in-depth learning.
3. We believe that instructional time is maximized when fewer transitions (class changes) exist.
4. We believe that opportunities need to exist for exploratory, advisory, and extracurricular programs.

Belief Statements

5. We believe that all students should have guaranteed access to a viable and rigorous curriculum.
6. We believe that when teachers have fewer students and students have fewer teachers, they are able to build stronger relationships and connections.
7. We believe that the arts serve as a valuable component of the educational process.
8. We believe that ongoing professional development is an essential component of the successful implementation of a strong middle school program.

Core Schedule

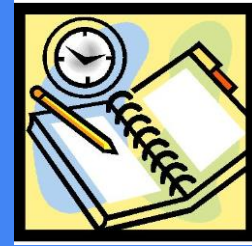


[Middle School Schedule](#)

SPECIAL AREA SCHEDULE

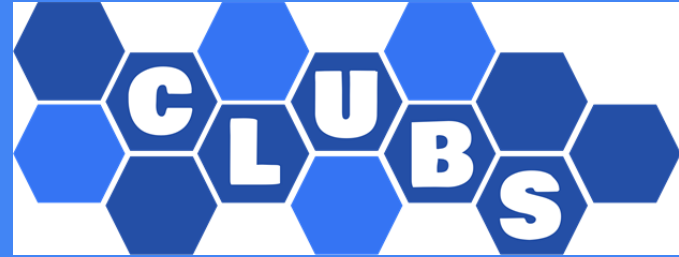
Grade	WL	Guidance	Phys Ed	Health	Art	Band, Chorus or Music	Library	FCS	Tech. Ed.	BCIT
6th	1/12	1/12	3/6		2/6	2/6	0	0	2/6	2/6
7th	2/6	0	2/6	0	2/6	2/6	0	2/6	2/6	0
8th	6/6 E	0	2/6 H & PE Grade 8 R 2/6 Activities & Sports E		2/6 E	2/6 E	2/6 Creation Studio E	0	2/6 STEM E	0

Sample Student Schedule



[Sample Middle School Student Schedule](#)

Activity Period



2 of 6 days - Advisory

Band and Chorus continues to be offered during Activity Period

School Counselor Involvement in Advisory

Clubs

Chorus



Professional Development



Act 80 Day, May 17, 2017: Middle School Philosophy & Teaching Strategies for Longer Class Periods

Reading Apprenticeship: Summer 2017

Differentiated Instruction: August & November 2017 InService

Department Curriculum Development: Summer 2017 and Ongoing